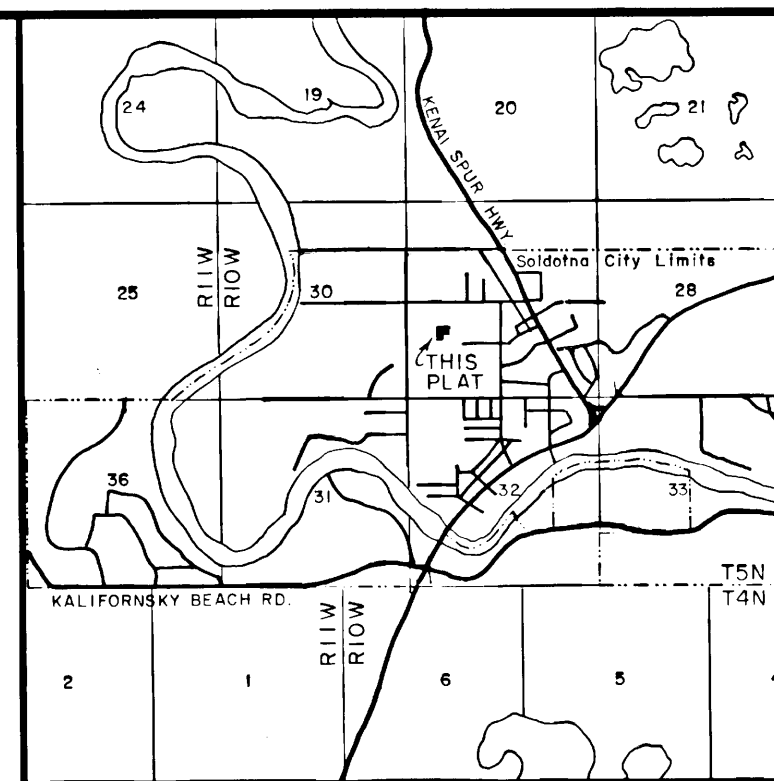


LINE	BEARING	DISTANCE
L1	N 0°08'23" W	55.05
L2	N 0°04'48" W	30.00

CURVE	ARC	DELTA	RADIUS	CHORD LENGTH	CHORD BEARING	TAN LENGTH
C1	11.37	89°51'19"	20.00	28.25	S 45°04'03" E	19.95



VICINITY MAP  
SCALE 1"=1 MILE

LEGEND

⊕ Official survey monument of record

● 5/8" rebar of record

▨ 20' Sewer Easement Granted By This Plat

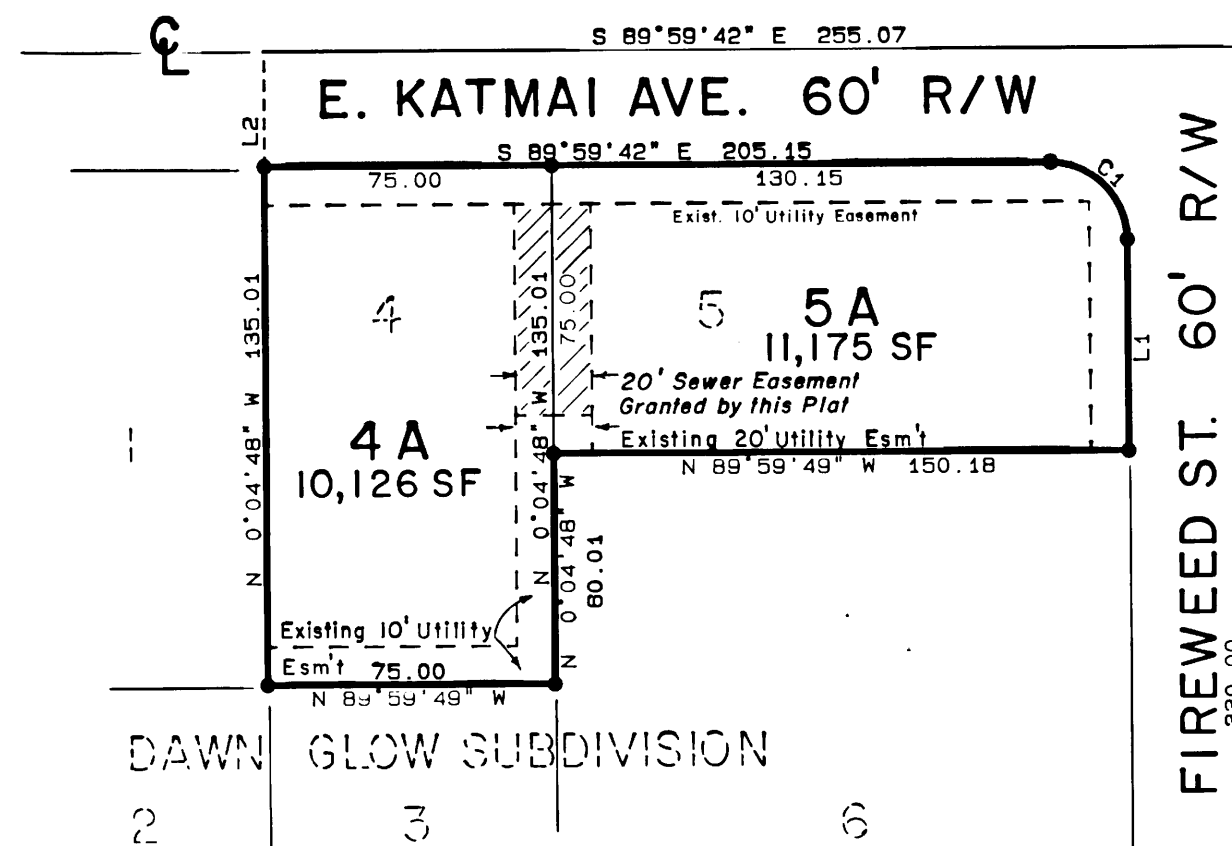
NOTES

1) Water supply and sewage disposal systems shall be permitted only in conformance with applicable requirements of 18 AAC 70, 18 AAC 72, and 18 AAC 80.

2) This subdivision must be served by City water and sewer.

3) This plat was prepared by compiling data from plat of record KRD 85-149 only and no additional field survey was performed.

4) The purpose of this plat is to grant the additional Sewer Easement shown to the City of Soldotna. There were no changes in the lot limits.



CW 1/16  
Sec. 29

Fireweed St. 60' R/W  
Basis of Bearing K.R.D. 85-149

SW 1/16  
Sec. 29



CERTIFICATE OF APPROVAL BY THE ALASKA  
DEPARTMENT OF ENVIRONMENTAL CONSERVATION

This subdivision has been reviewed in accordance with 18AAC72.065 and is approved, subject to any noted restrictions.

Randall A. Huklas EE II 1/26/89  
Signature Title Date

NOTARY'S ACKNOWLEDGEMENT

FOR: William P. Incho  
Subscribed and sworn before me this  
27th day of January, 1988.

My commission expires July 30, 1992  
Carie Lewis  
Notary Public for the State of Alaska

CERTIFICATE OF OWNERSHIP AND DEDICATION

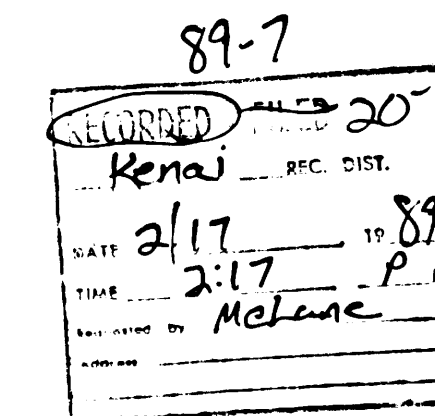
We hereby certify that we are the owners of the property shown and described hereon and that we hereby adopt this plan of subdivision and dedicate all right-of-ways to public use and grant all easements to the use shown.

First Federal Bank of Alaska, S.B. By: William P. Incho, Jr.  
Senior Vice President

PLAT APPROVAL

This plat was approved by the KENAI PENINSULA BOROUGH PLANNING COMMISSION at the meeting of

January 9, 1989 1988  
KENAI PENINSULA BOROUGH  
By: Richard P. Traylor  
Authorized Official



DAWN GLOW SUBDIVISION NO. 2  
A REPLAT OF LOTS 4 AND 5 DAWN GLOW

First Federal Bank  
813 W. Northern Lights Blvd.  
Anchorage, Alaska 99503

LOCATION

21, 301 S.F. LOCATED IN THE SE1/4 SE1/4 SW1/4 SECTION 29, T5N, R10W, S.M., AK., THE CITY OF SOLDOTNA AND THE KENAI PENINSULA BOROUGH IN THE KENAI RECORDING DIST.

Prepared by: McLANE and ASSOCIATES, INC.  
Soldotna, AK 99669

DATE Dec. 19, 1988	SCALE 1" = 50'	SHEET 1 of 1
DRAWN BY hp-gt	BK. No.	K.P.B. FILE No.
CHECKED BY msm	JOB No. 88-2046	89-003