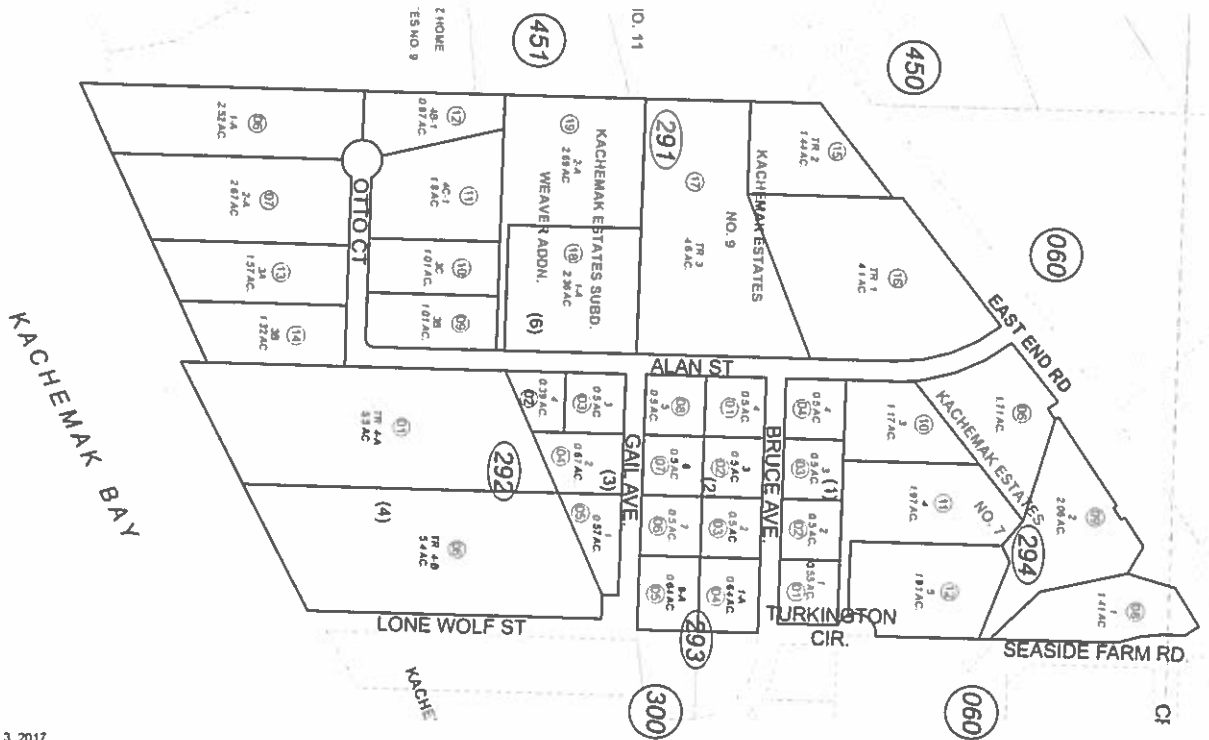


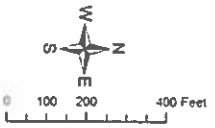
POR. SEC. 12, T06S, R13W, S.M.

174-290



JANUARY 3, 2017

For 2017 assessments roll		
Delete	Add	Revs
To	29115	
	29406	
	29408	
	29409	
(ACREAGE CHANGE)		



Assessor's Map
Kenai Peninsula Borough

- KACHEMAK ESTATES SUB. HM080003
- KACHEMAK ESTATES SUB 1993 ADDN. HM0630782
- KACHEMAK ESTATES SUB TRACTS 4A & 4B. HM0750082
- KACHEMAK ESTATES RESUB LOTS 3A & 4A. HM0780122
- KACHEMAK ESTATES SUB NO 7. HM0820058
- KACHEMAK ESTATES SUB NO 8. HM0840104
- KACHEMAK ESTATES SUB NO 10. HM0860082
- KACHEMAK ESTATES SUB NO 11. HM0880005
- KACHEMAK ESTATES SUB NO 9. HM0800020
- KACHEMAK ESTATES SUB WEAVER ADDN. HM2008012

Note - Assessor's block Numbers Shown in Ellipses
Assessor's Parcel Numbers Shown in Circles

This map is prepared for Kenai Peninsula Borough Assessing Dept use only and is not intended for conveyance nor is it a survey