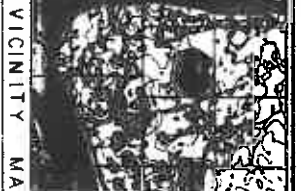


UNDIVIDED

RECORDED
JAN 13 AM 11:00
SUE PLANN
ANCHORAGE, ALASKA

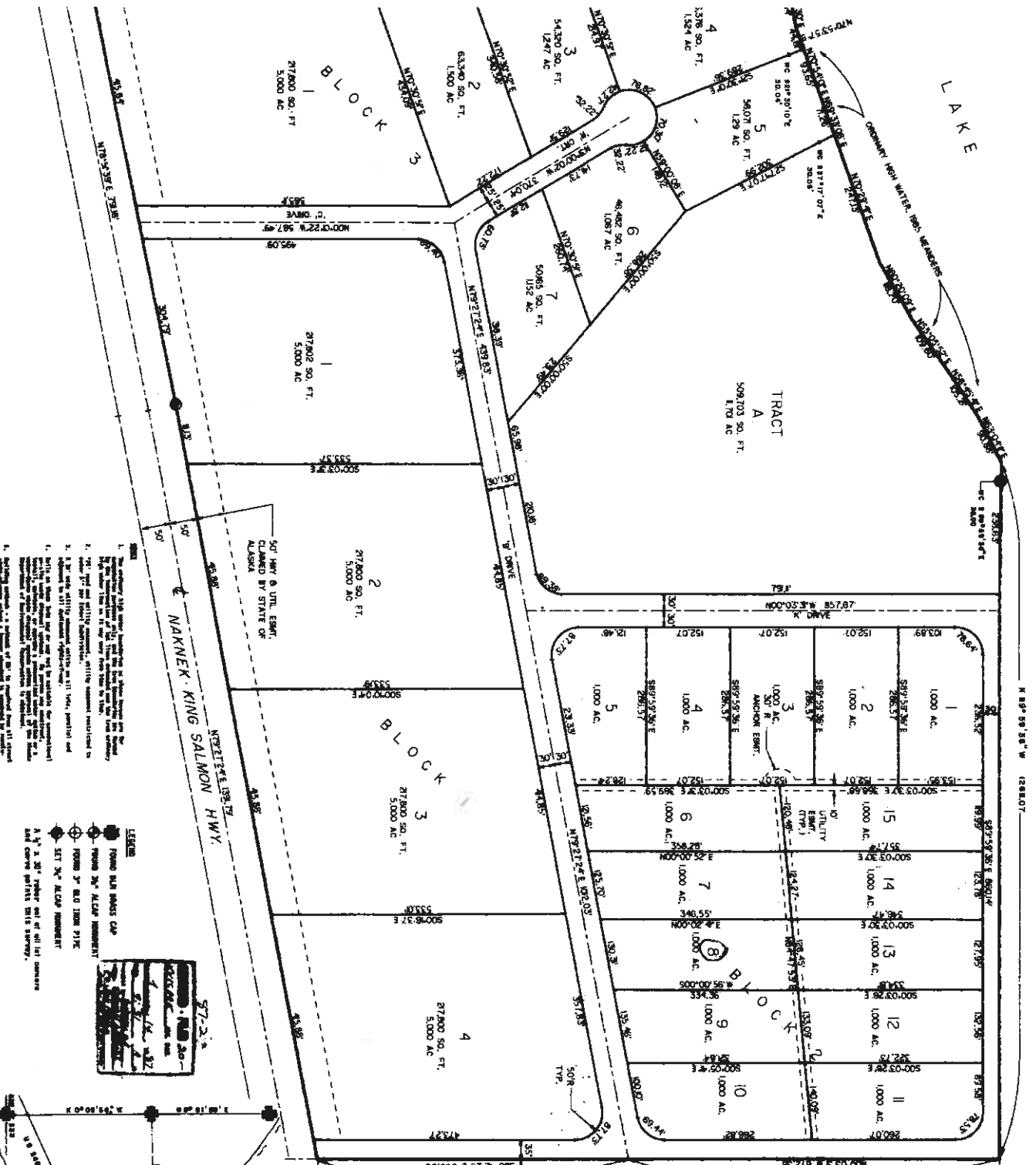
FIND 1/2" NEAR
N 10° 50' 30" W
E 128.07'



VICINITY MA



ECKERT SUB



1. The boundary lines shown hereafter in this plat were surveyed by the Surveyor General of Alaska on the 15th day of June 1904. The survey was made in accordance with the provisions of the Act of Congress of the 15th day of June 1896, approved July 1896, and the Act of Congress of the 11th day of March 1900, approved March 1900.

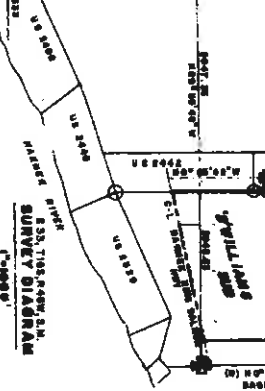
2. The plat is a true and correct copy of the original survey as shown on the map of the Surveyor General of Alaska.

3. The plat is subject to the provisions of the Act of Congress of the 11th day of March 1900, approved March 1900.

4. The plat is subject to the provisions of the Act of Congress of the 11th day of March 1900, approved March 1900.



LEGEND
FOUND BLK MASS CAP
FOUND 3" ALCP MONUMENT
FOUND 3" OLD IRON PIPE
SET 3" ALCP MONUMENT
A 3" x 3" stake and all lot corners and curve points set by survey.



B' WILLIAMS
A SURVEYOR
610 LOTS B. B. W.
RECEIVED \$100.00
CONTAINING 150 AC
W/1/2" THE SURVEY

SECTION 15, T4N, R10W, S12E, ALASKA
ECKERT SUB
TRACT A
509,103 SQ. FT.
170 AC