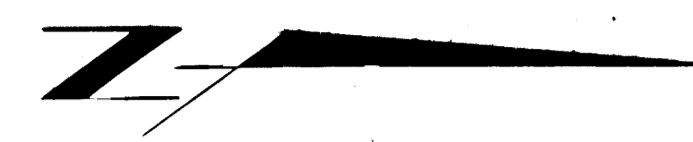


75-33
 RECORDED (LED) 344
 HOMER REC. DIST.
 DATE 7-22-75
 4:03 P.M.
 J.P.B.
 Sublette



CURVE DATA

no	angle	radius	tangent	length
1	36°00'00"	250.00	81.23	157.08
2	64°00'00"	250.00	156.22	279.25
3	69°00'00"	250.00	159.27	283.62
4	28°00'00"	250.00	55.42	109.08
5	71°34'50"	250.00	179.69	311.60
6	12°22'35"	1908.33	206.92	412.21

M. A. WRIGHT (unsubd)

LEGEND
 --- 10' UTILITY ESM'T

NOTES
 1. Set 1/2" x 30" rebar at all lot corners
 2. Set hub/flag at all road P.I.'s
 3. All R.O.W. returns are 20' radius unless noted otherwise

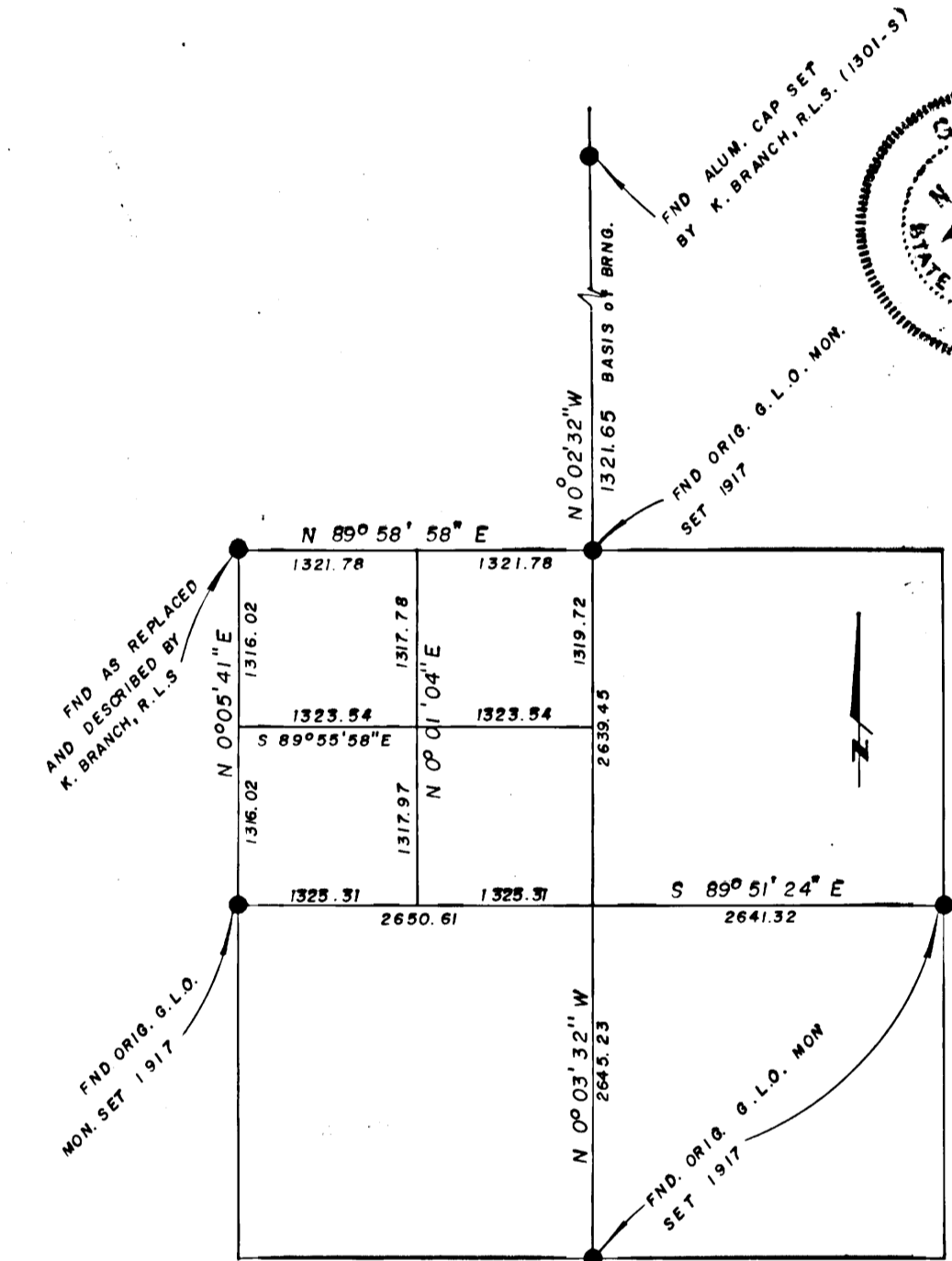


DIAGRAM OF THE NW 1/4 OF SEC. 9, T6S, R 14 W, S. M.

SECTION LINE EASEMENT VACATION CERTIFICATE

APPROVAL RECOMMENDATION
 STATE DEPARTMENT OF HIGHWAYS
 The vacation statement as shown hereon has been reviewed by the ANCHORAGE DISTRICT OFFICE and is hereby recommended for approval by the Commissioner.
 DATE 6-17-75

STATE DIVISION OF LANDS
 The vacation statement as shown hereon has been reviewed by the Division of Lands and is hereby recommended for approval by the Commissioner.
 DATE 6/21/75

TITLE *District*
 DATE 7/2/75
 DATE 7-7-75



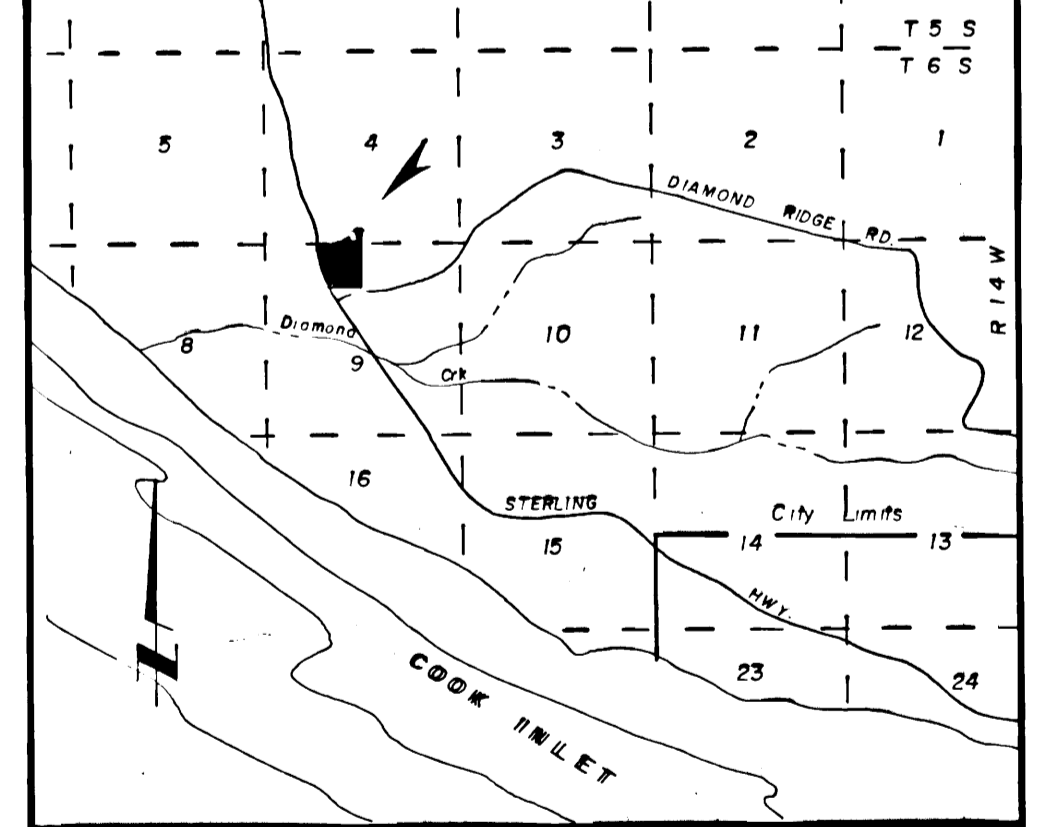
CERTIFICATE OF OWNERSHIP
 I (we) hereby certify that I am (we are) the owner(s) shown and described hereon. I (we) hereby request approval of this plat, showing such easements for public utilities, roadways and alleys dedicated by me (us) for public use.
 DATE 7-22-75
 JACK R. TILLMAN
 STERLING ROUTE
 HOMER, ALASKA

SURVEYOR'S CERTIFICATE
 I, the undersigned Registered Surveyor, hereby certify that a land survey has been completed by me or under my direct supervision and that corners and monuments have been located and established and that dimensions shown hereon are true and correct.
 DATE 6-6-75
 SURVEYOR

NOTARY'S ACKNOWLEDGMENT
 Subscribed & sworn to before me this 22nd day of July 1975.
 NOTARY IN & FOR THE STATE OF ALASKA

PLAT APPROVAL
 Plat approved by the Borough Planning Commission this day of July 1975.
 BOROUGH MAYOR

VICINITY MAP 1" = 1 MILE



SCALE: 1" = 100'
 SHEET NO. 1 OF 1
 DATE: 5/20/75
 DESIGNED BY: J. A.
 CHECKED BY: J. A.
 DRAWN BY: S. L.



SUNNY SLOPE SUBDIVISION
 Situated within the NE 1/4 NW 1/4 of Sec. 9, T6S, R14W, S.M., a portion of the SE 1/4 SW 1/4 of Sec. 4, T6S, R 14 W, S. M., Homer Recording District ALASKA
 CONTAINING 27.169 ACRES

ABILITY SURVEYS
 Jerry Anderson, L. S. Box 1263 Homer, Ak.